

DryLin® W - Sistema de guiado lineal para un campo de diseño casi ilimitado

Los sistemas de guiado lineal DryLin® W son un sistema premontado muy económico. El diseño de la guía lineal permite la mayor flexibilidad en el diseño y un montaje sencillo mediante el uso de raíles individuales o dobles. Los raíles de aluminio anodizado duro proporcionan los mejores resultados tanto en fricción como en desgaste. Al no requerir lubricación, nuestros sistemas presentan una alta resistencia a la suciedad. Es más, resultan idóneos para aplicaciones higiénicas o para salas blancas.

Ventajas

- Montaje sencillo y libre de mantenimiento
- Insensible a la suciedad gracias a su funcionamiento en seco
- Poco peso y funcionamiento silencioso
- Raíles cuadrados con cojinetes flotantes para instalar en esquinas
- Juego del cojinete ajustable manualmente (opcional)
- Versión en acero inoxidable (opcional)

¿Cuándo no aplicar?

- Cuando se requieran las mismas medidas a sistemas de recirculación de bolas
 - » [drylin® T](#)
 - » [drylin® R](#)
- Cuando se requiere un accionamiento integrado
 - » [drylin® SHT/SLW](#)

- 1 Raíl de aluminio anodizado duro (alternativa: versión en acero inoxidable AISI316)
- 2 Elemento deslizante en iglidur® J200
- 3 Carcasa de zinc (alternativa: versión de acero inoxidable AISI316)
- 4 Placa de montaje para patines completos de aluminio anodizado en 2 anchos y 3 largos para cada tamaño



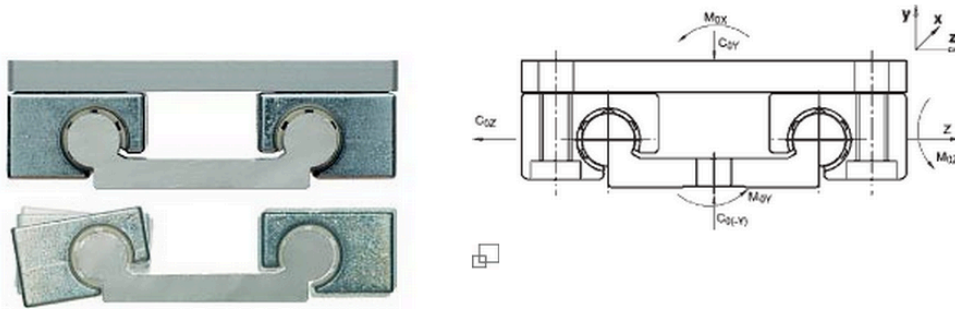
DryLin® W - La mayor flexibilidad en el diseño

DryLin® W - Datos técnicos

Tipo	Longitud del patín [mm]	Ancho del patín [mm]	C_{oy} [N]	C_{oz} [N]	M_{ox} [Nm]	M_{oy} [Nm]	M_{oz} [Nm]
WW-06-30-06	60	54	1680	840	25	34	34
WW-06-30-08	80	54	1680	840	25	51	51
WW-06-30-10	100	54	1680	840	25	68	68
WW-10-40-10	100	73	4800	2400	96	170	170
WW-10-40-15	150	73	4800	2400	96	290	290
WW-10-40-20	200	73	4800	2400	96	410	410
WW-10-80-10	100	107	4800	2400	178	170	170
WW-10-80-15	150	107	4800	2400	178	290	290
WW-10-80-20	200	107	4800	2400	178	410	410
WW-16-60-10	100	104	8400	4200	240	270	270
WW-16-60-15	150	104	8400	4200	240	480	480
WW-16-60-20	200	104	8400	4200	240	690	690
WW-20-80-15	150	134	12800	6400	525	670	670
WW-20-80-20	200	134	12800	6400	525	990	990
WW-20-80-25	250	134	12800	6400	525	1250	1250

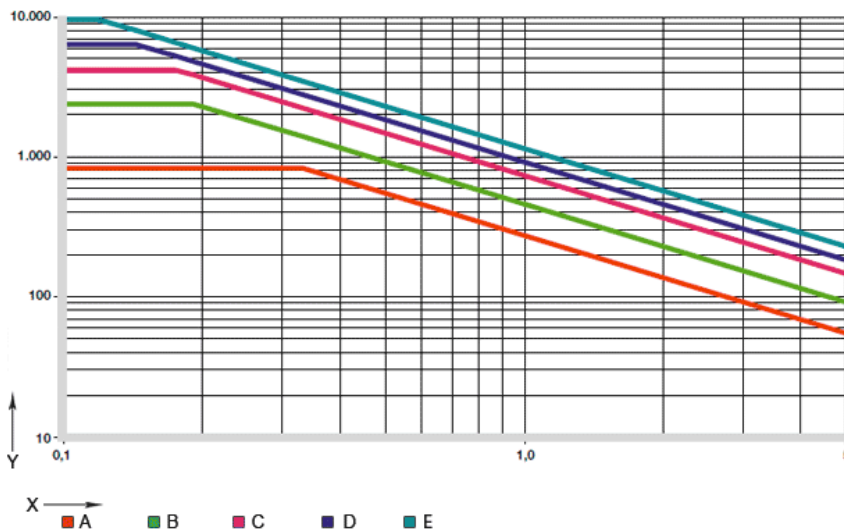
El valor de C_{oy} es válido también para $C_{o(-y)}$.

Tabla 01: Capacidad de carga estática de carro completo, formado por 4 cojinetes y una pletina



	Tamaño 6 [mm]	Tamaño 10 [mm]	Tamaño 16 [mm]	Tamaño 20 [mm]
Raíl individual, cilíndrico		•	•	•
Raíl individual, cuadrado	•	•	•	•
Raíl doble, cilíndrico		•	•	•
Raíl doble, cuadrado	•	•	•	•
Sistema completo	•	•	•	•

Diagrama F x v, carga dinámica máx. permisible (4 sistemas de Cojinetes)



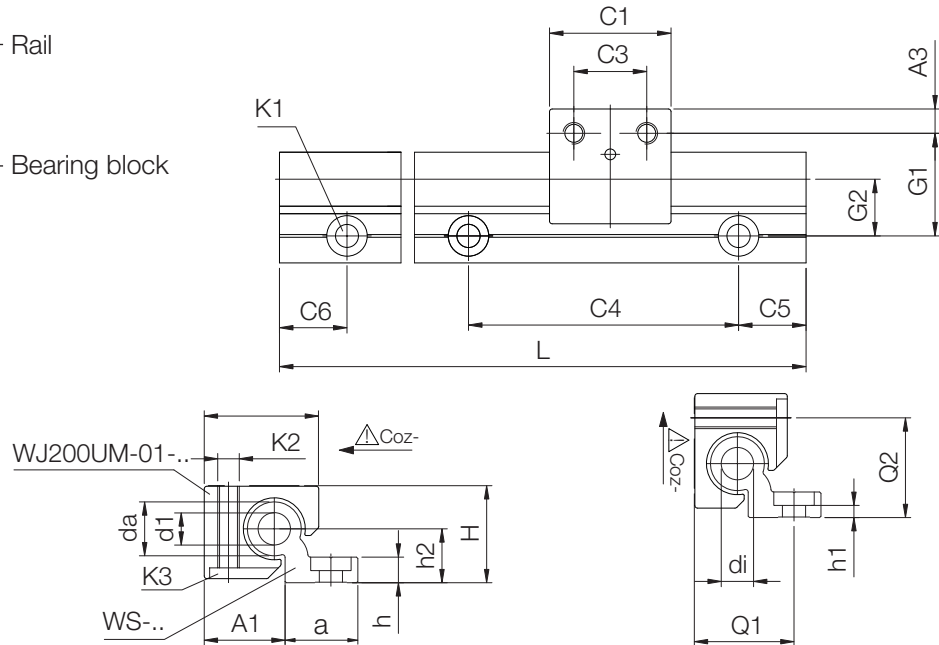
X = velocidad v [m/s]
Y = carga F [N]

A = tamaño 6
B = tamaño 10
C = tamaño 16
D = tamaño 20

Single rail and housing bearing, round



Order key
complete ► page 785



Illustrated rails may vary in color due to the technical coating!

displayed assembling position not possible for WS-10

DryLin® W Guide Rails, Round – Load Data and Dimensions [mm]

Part number	Weight [kg/m]	H ±0.07	da -0.1	di	L max.	a -0.3	h	h1	h2	G1	G2	A1	Q1	Q2
WS-10	0.62	18	10	-	4,000	27	5.5	5.5**	9	27	17	16.5	-	-
WS-16	0.98	27	16	8.0	4,000	27	7.5	3.5	14	33	19	25	32	28
WS-20	1.32	36	20	10.2	4,000	27	9.5	4.5	20	38	21	30	37	37

Part number	C4	C5 min.	C5 max.	C6 min.	C6 max.	K1 for Screw DIN 912	ly [mm ⁴]	lz [mm ⁴]	Wby [mm ³]	Wbz [mm ³]
WS-10	120	20	79.5	20	79.5	M6**	19,000	2,850	1,000	310
WS-16	120	20	79.5	20	79.5	M8	36,000	12,900	1,800	940
WS-20	120	20	79.5	20	79.5	M8	57,100	35,000	2,700	1,900

Standard bore pattern symmetrical: C5 = C6; please order C5 ≠ C6 with drawing

** Trough bore



delivery available
time from stock



prices price list online
www.igus.eu/eu/DryLinW



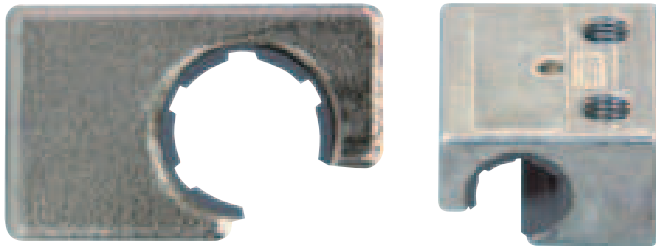
order part number
example WS-10

DryLin® W Modular Guide Systems | Product Range

Single rail and housing bearing, round



Order key
complete ► page 785

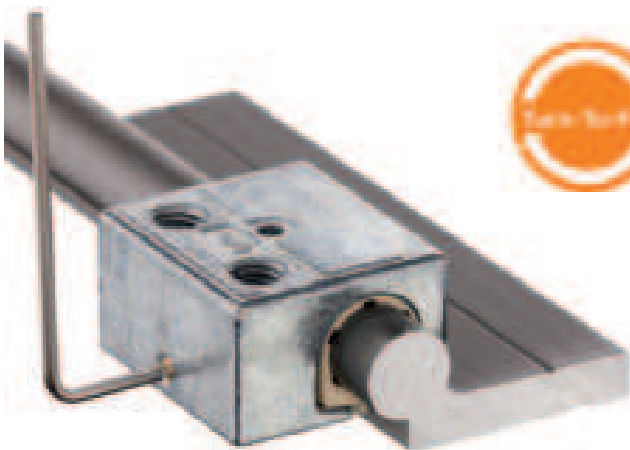


All parts can be ordered individually
or as an assembled system

DryLin® W Housing Bearing, Round – Load Data and Dimensions [mm]

Part number	Floating bearing play	Floating-bearing direction	Weight [g]	B	C1	C3	A3	K2	K3	Stat. Load Capac.		
										Coy [N]	Coz+ [N]	Coz- [N]
WJ200UM-01-10	–	–	41	26	29	16	6.5	M6	M5	1,200	1200	250
WJ200UM-01-10-LL	±0.2	–	41	26	29	16	6.5	M6	M5	1,200	1,200	250
WJ200UM-01-16	±0.2	–	100	34.5	36	18	9	M8	M6	2,100	2,100	400
WJ200UM-01-20	–	–	190	42.5	45	27	9	M8	M6	3,200	3200	500
WJ200UM-01-20-LL	±0.25	–	190	42.5	45	27	9	M8	M6	3,200	3,200	500

Order example: WJ200UM-01-10 for a housing bearing, round
WJ200UM-01-10-LL for a housing bearing, round with floating z-direction



- Manual adjustable clearance by “Turn-To-Fit” function (allen key included in delivery)
- Adjusting screw: max. torque 0.1 Nm
- 100 % lubrication-free
- Compact dimensions
- 8 different rail profiles available

DryLin® W Linear Guides with “Turn-to-Fit” – Dimensions [mm]

Part number	Weight [g]	B	C1	C3	A3	K2	H	SW	G1
WJUME-01-10	43	26	20	16	6.5	M6	18	1.5	27
WJ200UME-01-16	110	34.5	36	18	0	M8	27	2.5	33
WJ200UME-01-20	222	42.5	45	27	0	M8	36	2.5	38



delivery available
time from stock

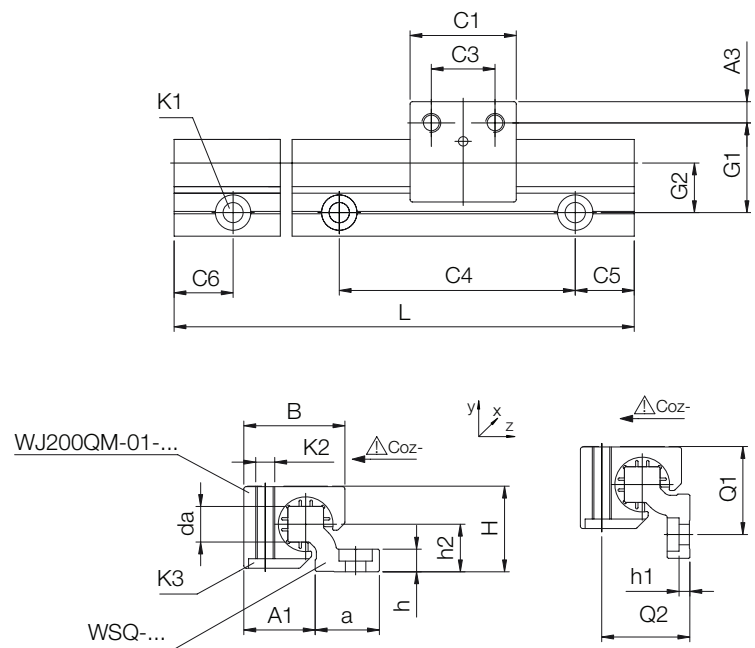
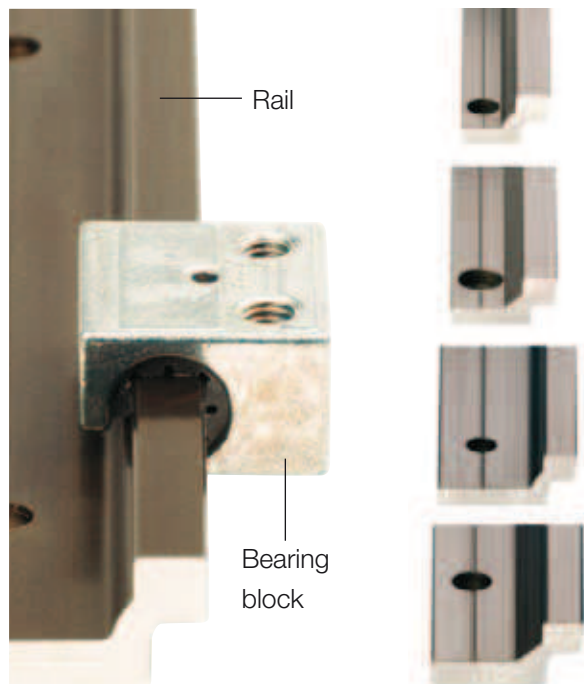



prices price list online
www.igus.eu/eu/DryLinW



order part number
example WJ200UM-... Housing bearing, round
WJUME-... Turn-To-Fit Linear Guide

Single rail and housing bearing, square



 **Hard anodized surface**
▶ page 892

drylin® W Guide Rails, Square – Load Data and Dimensions [mm]


Part number	Weight [kg/m]	H* ±0.07	da -0.1	L max.	a	h	h1	h2	G1	G2	A1	Q1	Q2
WSQ-06	0.23	14	5	3,000	14	4	4**	7.5	18	10.5	13.5	17	15
WSQ-10	0.54	20	7.5	4,000	25	5.5	5.5**	11	27	17	18.5	26	21
WSQ-16	0.94	27	11.5	4,000	27	7.5	3.5	14	33	19	25	32	28
WSQ-20	1.41	36	15	4,000	27	9.5	4.5	20	38	21	30	37	37

Part number	C4	C5 min.	C5 max.	C6 min.	C6 max.	K1 for screw DIN 912	ly [mm ⁴]	lz [mm ⁴]	Wby [mm ³]	Wbz [mm ³]
WSQ-06	60	20	49.5	20	49.5	M4**	2,200	640	220	100
WSQ-10	120	20	79.5	20	79.5	M6**	16,100	3,300	950	350
WSQ-16	120	20	79.5	20	79.5	M8	33,000	10,800	1,700	910
WSQ-20	120	20	79.5	20	79.5	M8	56,500	34,000	2,600	2,100

Standard bore pattern symmetrical: C5 = C6; please order C5 ≠ C6 with drawing

* Height dimension minus the bearing clearance tolerance

** Trough bore

Fits to housing bearing, square  ▶ page 953

 **delivery** from stock
time

 **prices** price list online
www.igus.eu/eu/drylinW

 **order key**
complete ▶ page 972

drylin® W Modular Guide Systems | Product Range

Single rail and housing bearing, square

All parts can be ordered individually
or as an assembled system

drylin® W Housing Bearings, Square – Load Data and Dimensions [mm]

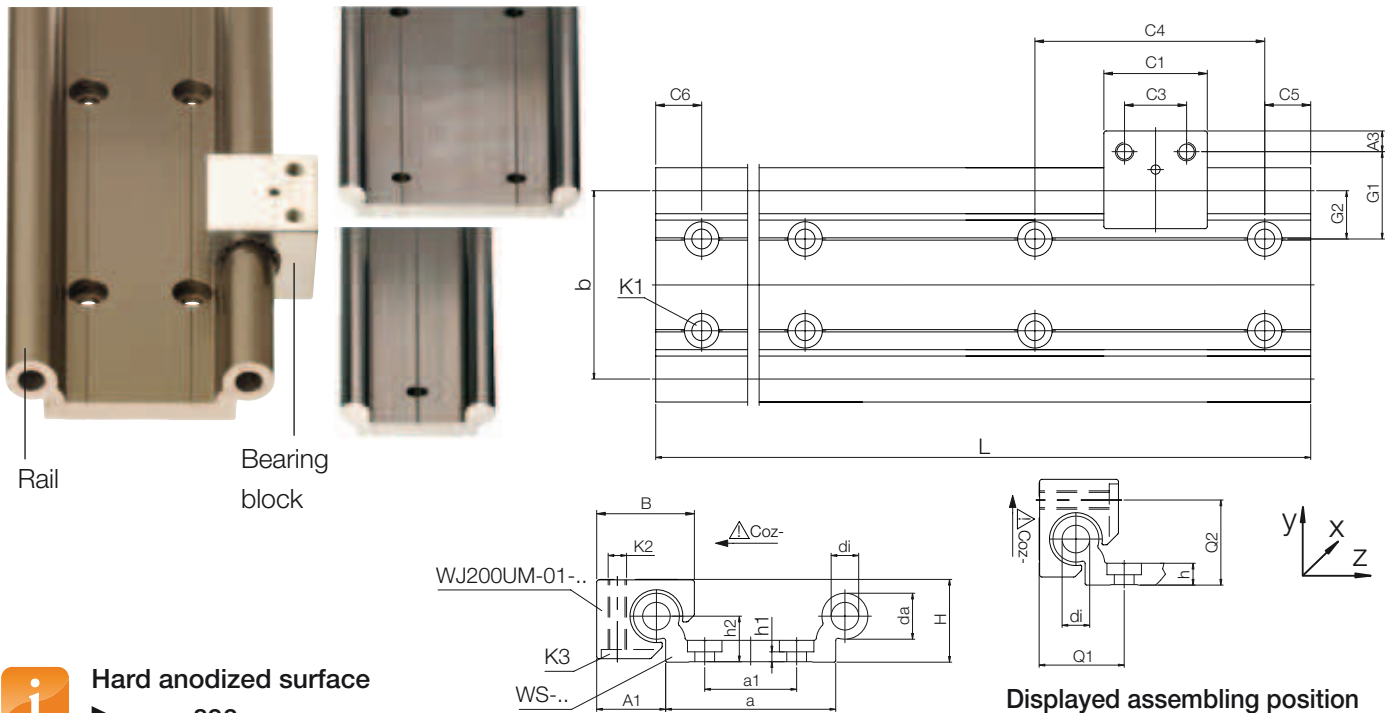
Part number	Floating bearing play	Floating bearing direction	Weight [g]	B	C1	C3	A3	K2	K3	Stat. Load Capac.		
										Coy [N]	Coz+ [N]	Coz- [N]
WJ200QM-01-06	–	–	16	18	19	10	4.5	M4	M3	420	420	140
WJ200QM-01-06-LLZ	± 0.5	z	16	18	19	10	4.5	M4	M3	420	420	140
WJ200QM-01-06-LLY	± 0.5	y	16	18	19	10	4.5	M4	M3	420	420	140
WJ200QM-01-10	–	–	41	26	29	16	6.5	M6	M5	1,200	1,200	250
WJ200QM-01-10-LLZ	± 0.7	z	41	26	29	16	6.5	M6	M5	1,200	1,200	250
WJ200QM-01-10-LLY	± 0.7	y	41	26	29	16	6.5	M6	M5	1,200	1,200	250
WJ200QM-01-16	–	–	100	34.5	36	18	9	M8	M6	2,100	2,100	400
WJ200QM-01-16-LLZ	± 1.0	z	100	34.5	36	18	9	M8	M6	2,100	2,100	400
WJ200QM-01-16-LLY	± 1.0	y	100	34.5	36	18	9	M8	M6	2,100	2,100	400
WJ200QM-01-20	–	–	190	42.5	45	27	9	M8	M6	3,200	3,200	500
WJ200QM-01-20-LLZ	± 1.0	z	190	42.5	45	27	9	M8	M6	3,200	3,200	500
WJ200QM-01-20-LLY	± 1.0	y	190	42.5	45	27	9	M8	M6	3,200	3,200	500

Order example: WJ200QM-01-06 for a housing bearing, square

WJ200QM-01-06-LLZ for a housing bearing, square with floating z-direction

Fits to single rail, square  page 952double rail, square  page 958delivery from stock
timeprices price list online
www.igus.eu/eu/drylinWorder key complete  page 972

Double rail, round



Displayed assembling position
not possible for WS-10-40 and
WS-10-80

i Hard anodized surface
▶ page 892

drylin® W Guide Rails – Dimensions [mm]

Part number	Weight [kg/m]	H* ±0.07	da	di	L max.	a	A1	b	h	h1	h2	G1	G2	a1**	Q1	Q2
WS-10-40	1.00	18	10-0.1	-	4,000	40-0.5	16.5	40	5.5	5.5***	9	30	20	-	-	-
WS-10-80	1.50	18	10-0.1	-	4,000	74-0.7	16.5	74	5.5	5.5***	9	27	17	40	-	-
WS-10-120 New!	2.02	18	10-0.1	-	4,000	120-0.7	16.5	120	5.5	5.5	9	30	20	80	-	-
WS-16-60	1.96	27	16-0.1	8.0	4,000	54-0.5	25.0	58	7.5	3.5	14	43	29	-	32	28
WS-20-80	3.30	36	20-0.1	10.2	4,000	74-0.7	30.0	82	9.5	4.5	20	38	21	40	37	37
WS-25-120	5.8	45	25-0,15	14.0	4,000	120-0.7	37.5	131	11.5	5.5	25	46.5	25.5	80	45.5	46



* Height dimension minus the bearing clearance tolerance

** WS-10-40 and WS-16-60 a single row of mounting holes down the centreline; WS-10-80 and WS-20-80 two parallel rows of mounting holes

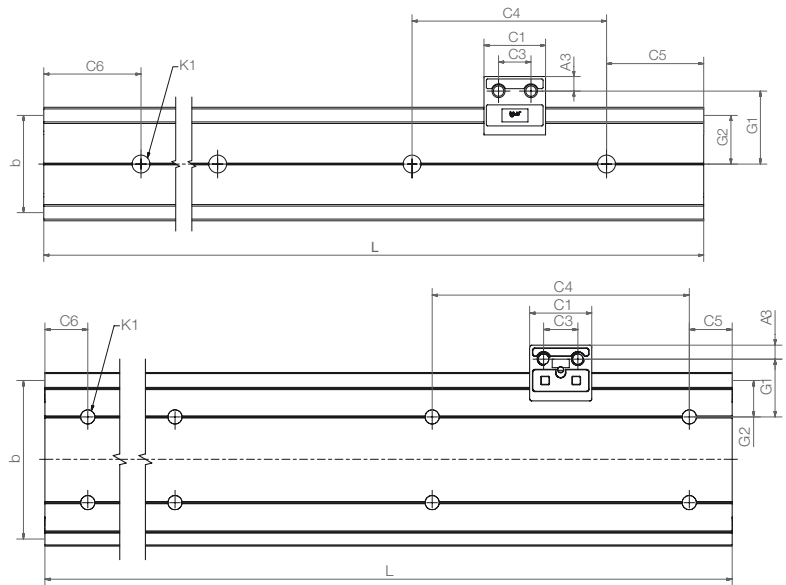
Part number	C4	C5		C6		K1 for Screw DIN 912	ly [mm ⁴]	lz [mm ⁴]	Wby [mm ³]	Wbz [mm ³]
		min.	max.	min.	max.					
WS-10-40	120	20	79.5	20	79.5	M6***	91,000	5,100	3,600	590
WS-10-80	120	20	79.5	20	79.5	M6***	388,000	6,100	9,200	650
WS-10-120 New!	120	20	79.5	20	79.5	M6***	1,303,000	7,100	20,000	720
WS-16-60	120	20	79.5	20	79.5	M8	367,600	26,100	9,900	1,900
WS-20-80	120	20	79.5	20	79.5	M8	1,080,000	78,700	21,000	4,000
WS-25-120	150	25	99.5	25	99.5	M10	4,867,000	215,000	62,400	8,500

Standard bore pattern symmetrical: C5 = C6; please order C5 ≠ C6 with drawing

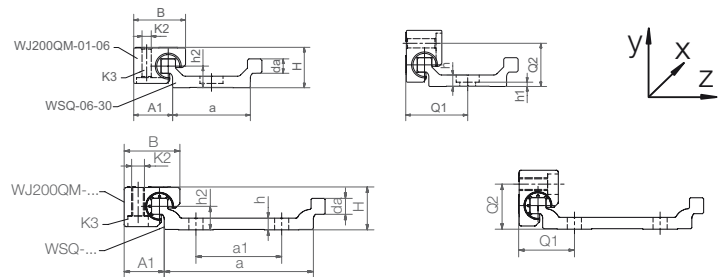
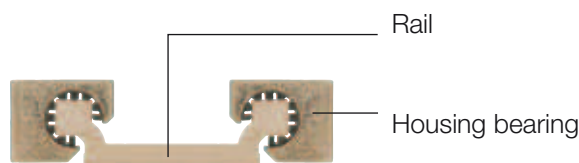
*** Trough bore

Fits to housing bearing, round  ▶ page 955
double carriage, round  ▶ page 963

Double rail, square



i Hard anodized surface
▶ page 892



drylin® W Guide Rails – Dimensions [mm]

Part number	Weight [kg/m]	H* ±0.07	da -0.1	L max.	a	A1	b	h	h1	h2	G1	G2	a1**	Q1	Q2
WSQ-06-30	0.45	14	5	3,000	27-0.4	13.5	30	4	4***	7.5	22.5	15	-	21.5	15
WSQ-10-40	0.92	20	7.5	4,000	36-0.5	18.5	40	5.5	5.5***	11	30	20	-	29	21
WSQ-10-80	1.41	20	7.5	4,000	70-0.7	25.0	74	5.5	5.5***	11	27	17	40	26	21
WSQ-10-120 New!	2.02	20	7.5	4,000	116-0.7	18.5	120	5.5	5.5	11	30	20	80	29	21
WSQ-16-60	1.84	27	11.5	4,000	54-0.5	30.0	58	7.5	3.5	14	43	29	-	42	28
WSQ-20-80 New!	3.30	36	15	4,000	74-0.7	30	82	9.5	4.5	20	38	21	40	37	37

Part number	C4		C5		C6		K1 for Screw DIN 912	ly [mm ⁴]	lz [mm ⁴]	Wby [mm ³]	Wbz [mm ³]
	min.	max.	min.	max.	min.	max.					
WSQ-06-30	60	20	49.5	20	49.5	20	M5***	19,000	1,250	1,100	200
WSQ-10-40	120	20	79.5	20	79.5	20	M6***	71,600	5,580	3,000	610
WSQ-10-80	120	20	79.5	20	79.5	20	M6***	335,000	7,070	8,300	700
WSQ-10-120 New!	120	20	79.5	20	79.5	20	M6***	1,175,000	8,000	18,400	760
WSQ-16-60	120	20	79.5	20	79.5	20	M8	324,700	20,500	9,400	1,700
WSQ-20-80 New!	120	20	79.5	20	79.5	20	M8	1,145,000	75,300	23,600	4,500

* Height dimension minus the bearing clearance tolerance

** WSQ-06-30 and WSQ-10-40 a single row of mounting holes down the centreline, WSQ-10-80 two parallel rows of mounting holes

*** Trough bore

delivery from stock
time

prices price list online
www.igus.eu/eu/drylinW

order key
complete ▶ page 972